

2023-2024

# ANNUAL SUSTAINABILITY SUMMARY

LEADERSHIP IN SUSTAINABILITY





# CONTENTS

- Our Approach ..... 1
- Areas of Focus - UN Sustainable Development Goals..... 2
- Waste & Purchasing ..... 3-4
- Energy & Transportation ..... 5-6
- Water..... 7-8
- Environment & Air Quality ..... 9-10
- Technology ..... 11-12
- Community: Inclusivity ..... 13-14
- Community: End Poverty..... 15-16
- Community: Well Being ..... 17-18
- Partnerships..... 19-20

# OUR APPROACH

Our organization is known for creating the best experiences imaginable and that includes providing a setting that is a model of sustainable practices. Since 2009, we have prioritized sustainable operations for the venues we manage.

Xcel Energy Center, Saint Paul RiverCentre, Roy Wilkins Auditorium, 317 on Rice Park, and TRIA Rink

What started with waste reduction and recycling, has grown into a comprehensive program covering energy efficiency, renewable energy, green purchasing, sustainable travel, and multiple third-party certifications.

We recognize that sustainability today includes important social factors such as equality, health, and education. To align with these initiatives, we have adopted the UNITED NATIONS SUSTAINABLE DEVELOPMENT GOALS to guide our efforts.

These 17 goals reflect a holistic approach to sustainability for both people and the planet.

**We're proud of our progress and eager to embrace new opportunities for a sustainable future.**



# AREAS OF FOCUS



The 2023-2024 Annual Sustainability Summary connects our efforts to the United Nations Sustainable Development Goals (SDGs), showcasing our contributions to environmental stewardship, community well-being, and innovation in the sports and events industry.



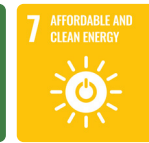
# WASTE & PURCHASING

## 2023-2024 HIGHLIGHTS

-  In 2023-2024 we recycled **60.3%** of all our waste.
-  **65%** of our cleaning products meet green standards.
-  Last year we recycled almost **11 tons** of electronics and old appliances.
-  Last year we composted **267 tons** of material.
-  **65%** of our office product purchases meet sustainable criteria.
-  In 2023-2024, we recycled **268 tons** of cardboard and mixed recyclables.

## ONGOING EFFORTS

-  A **Purchasing Playbook** helps our staff make earth-friendly purchasing decisions.
-  More than just cans and bottles. We recycle over **12** different kinds of materials.
-  After each food show, our **Green Team** sorts waste and donates materials to divert products from the landfill.
-  All disposable products in RiverCentre's catering operation are **100%** compostable.



# ENERGY & TRANSPORTATION

## 2023-2024 HIGHLIGHTS



We invested in **12 million kWh** of renewable energy last year.



Our on-site solar arrays generated **817,000 kWh** of energy last year.



Our solar garden subscription generated **5.3 million kWh** in electricity last year.



Over **12,000** lights have been upgraded to more efficient models since our program began.

## ONGOING EFFORTS



8 electric vehicle car **charging stations** are available at the RiverCentre Parking Ramp to support carbon-free commuting.



5 bike racks around our campus encourage **carbon-free** commuting.



# WATER

## 2023-2024 HIGHLIGHTS



Since 2015, we've removed over 10,000 pounds of trash from the Mississippi River banks as part of our Adopt-a-River commitment.



Our current water use averages **7.5 gallons** per visitor, much less than most other buildings like us.

## ONGOING EFFORTS



One simple change to our restroom faucets is saving **78,000 gallons** of water per year.



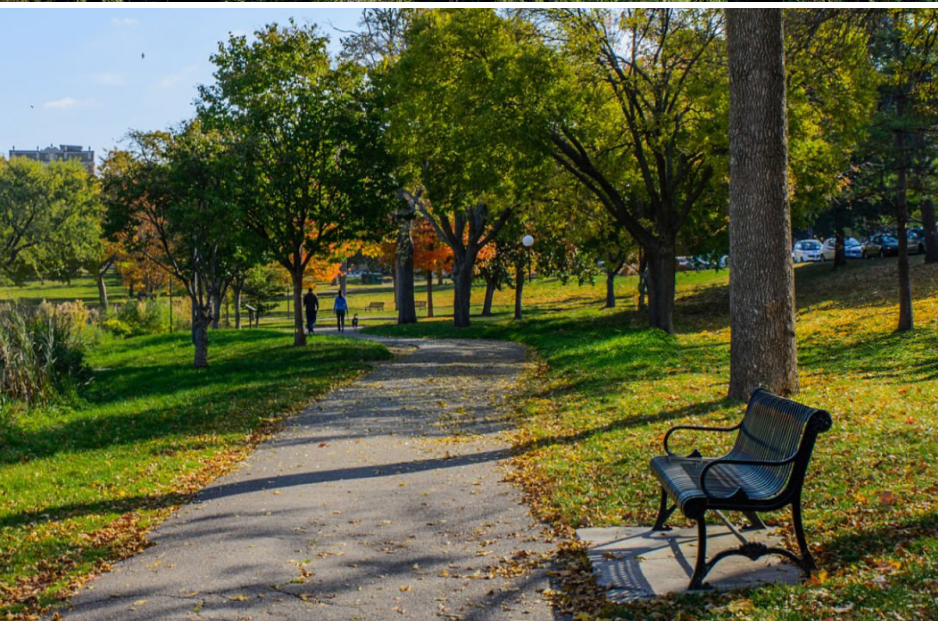
Monitoring equipment allows us to view **water use** patterns for each event.



We adopted **8 local storm drains** to keep our neighborhoods clean and protect our local waterways.



**5 bottle-filling** stations provide fresh water to employees.



# ENVIRONMENT & AIR QUALITY

## 2023-2024 HIGHLIGHTS



**6,600 trees** were planted to celebrate RiverCentre's 25th anniversary.



Our employees regularly participate in **Adopt a Highway**, eliminating trash from Minnesota roadways.



**1,300 tons CO2** offset – in partnership with UPM Blandin Forestry. Equal to the entire season of Minnesota Wild team air travel.



**Atmos Air**, an air purification system, was installed in our venues to ensure cleaner air quality and reduce energy use.

## ONGOING EFFORTS



**No idling** in the loading dock minimizes exhaust fumes in the building.



Some of our cleaning equipment cleans using only **water**.



# TECHNOLOGY

## 2023-2024 HIGHLIGHTS



Implementing **KOLO technology** in our restrooms enables us to reduce waste by monitoring product use.



Changing our **ice rink** refrigeration system to ammonia-based technology supports our sustainability goals.

## ONGOING EFFORTS



Energy monitoring software tracks our electric, heating, cooling and gas use to help us **reduce** and prevent wasted energy.




High speed, automatic garage doors in our loading docks save energy by helping keep conditioned air inside the building.






# COMMUNITY: INCLUSIVITY

## 2023-2024 HIGHLIGHTS

 Proud to be the home ice of the Professional Women's Hockey League's Minnesota Frost.

 We are "Wild" about our community and host events including Hockey Day Minnesota, Hockey is for Me, Twin Cities Pride events, and many more.


 Celebrating 20 years as the home of Minnesota Roller Derby, a league committed to the empowerment of women, non-binary, and gender-expansive people.

 Our facilities are designed for accessibility, ensuring guests with mobility, hearing, and visual limitations enjoy the same great experience as everyone else.




# COMMUNITY: END POVERTY


## 2023-2024 HIGHLIGHTS

 We provide year-round living wage jobs that enable our staff to build a sustainable life in our community.

 Employees receive **40 hours** of paid Volunteer Time Off to support Heart of the Wild community programs.

 We held **6 donation drives** this year including school supplies, hockey equipment, women's clothing, winter coats, pet supplies, and a holiday toy drive.


 **23,991 pounds** of food was donated into the community following our post-event Green Team collections.


 **60 employees** participated in our annual Habitat for Humanity Build Week helping build housing for local families.




# COMMUNITY: WELL BEING

## 2023-2024 HIGHLIGHTS

 Employee wellness initiatives include an on-campus gym, an assistance program, and a rooftop vegetable garden.

 We support education and leadership through programs like Wild Buddies mentoring, Wild About Reading, and STEM Day events.

 Our Minnesota Wild Faceoff for Fitness and Future Goals events teach youth the importance of a healthy and active lifestyle.

 Our campus hosts multiple wellness events including an annual Red Cross Blood Drive.



# PARTNERSHIPS

Partnerships accelerate our progress by combining strengths, sharing knowledge, and driving greater impact. We collaborate with local, national, and global partners to advance sustainability across a range of initiatives.



# LEADERSHIP IN SUSTAINABILITY

Visit our websites for more information:

[xcelenergycenter.com/sustainability](http://xcelenergycenter.com/sustainability)

[rivercentre.org/sustainability](http://rivercentre.org/sustainability)

